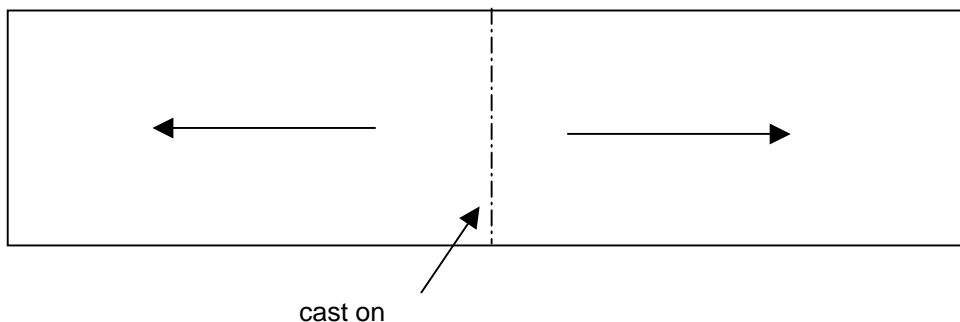


Thetis



Indications:

This shawl starts in the middle and is knit to the edge



cast on:

use "magic cast on"

<http://www.knitty.com/ISSUESpring06/FEATmagiccaston.html>

cast on 80 st and group the stitches as follow:

7 st for border, 66 st for the middle, 7 st for border

row 1 to 60 Chart H1, Chart A1, Chart H2

Die Charts H1 und H2 werden über die gesamte Länge des Schals gestrickt und folgenden nicht mehr erwähnt

row 61 to 100 Chart B

row 101 to 140 Chart C

row 141 to 160 Chart D

row 161 to 180 Chart E

row 185 to 200 Chart F

row 209 to 240 Chart G

Work the second half similar, but use Chart A2
Weave in loose ends and blog

have fun
Dagmar Lutz

isi_s@arcor.de

facts

yarn: 100% silk. 700m/100g

yarn need: 95 g

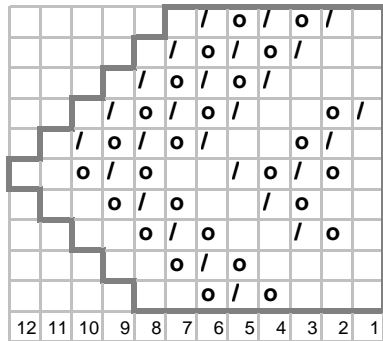
needles US 7

size: 220cm x 30 cm

isi_s@arcor.de

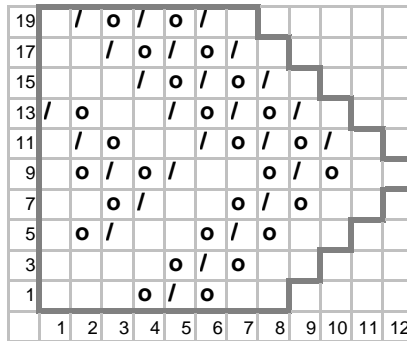


Chart H2



linker Rand (left border)

Chart H1



rechter Rand (right border)

□ rechte Masche auf der rechten Seite, linke Masche auf der linken Seite (knit on RS, purl on WS)

o = Umschlag (yarn over)

/ = 2 Maschen zusammenstricken (knit two together)

\ = 2 Maschen überzogen zusammenstricken (slip one, knit one, pass)

m = 3 Maschen zusammenstricken (knit three together)