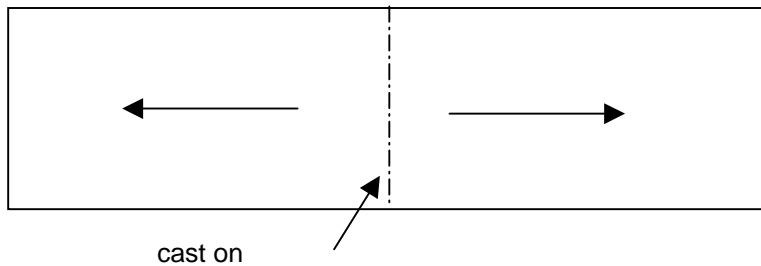


Ismene

Indications:

This shawl starts in the middle and is knit to the edge



cast on:

use "magic cast on"

<http://www.knitty.com/ISSUESpring06/FEATmagiccaston.html>

Cast on 72 stitches

Knit Chart A three times

Knit Chart B

Work the second half similar

Weave in loose ends and blog

have fun

Dagmar Lutz

isi_s@arcor.de

facts

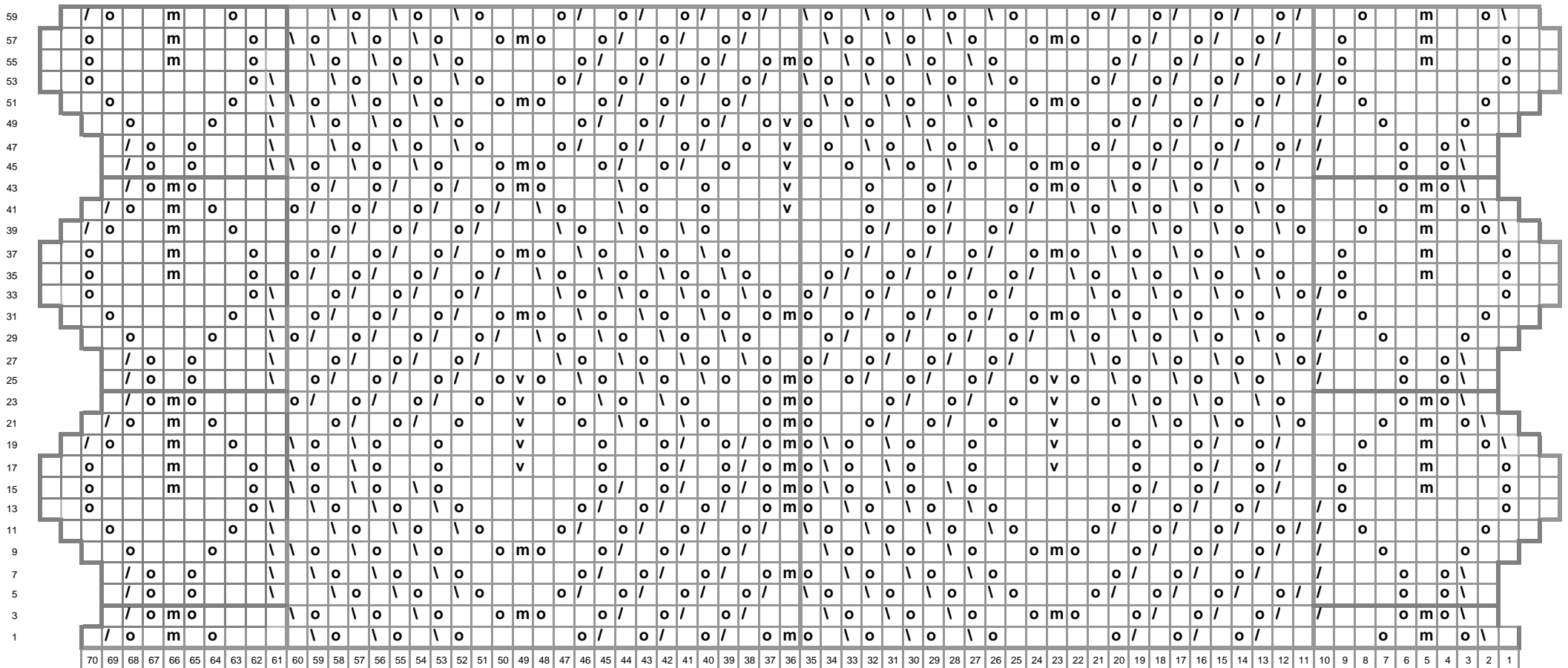
yarn: 100% cashmere 750m/100g

yarn need: 96 g

needles US 7

size: 36cm x 160cm

Chart A



rechte Masche auf der rechten Seite, linke Masche auf der linken Seite (knit on RS, purl on WS)

o = Umschlag (yarn over)

/ = 2 Maschen zusammenstricken (knit two together)

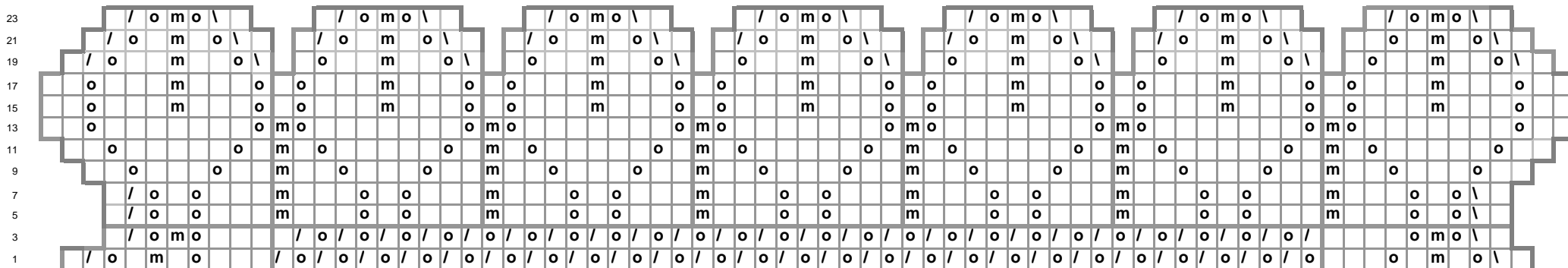
\ = 2 Maschen überzogen zusammenstricken (slip one, knit one, pass)

m = 3 Maschen zentriert zusammenstricken (centered double decrease, slip 2 stitches as if to knit together, knit 1 stitch, pass slipped stitches over)

v = 3 Maschen links gerichtet zusammenstricken (sl1, k2tog, pssso, (slip one stitch then knit the next two together and pass the slipped stitch over))

download von www.stricknetz.de

Chart B



download von www.stricknetz.de