

Thallo



General:

The Faroese Shawl is a traditional garment of the faroer islands. The special feature is the shaping of the shoulder.

These shawls are composed with 2 triangels and a wedge in the middle

About these shawl:

The shawl is composed as follows: border, triangel, wedge, triangel, border

All stitches on the right side are knit and on the wrong side purl.

Reading the chart:

The key is in the chart

Even rows are not in the chart

Cast on:

10 stitches wirth "magic cast on"

<http://www.knitty.com/ISSUESpring06/FEATmagiccaston.html>

Start with row 7 of chart A

Knit 52 rows of Chart A

Cut yarn

Use the other side of magic cast on an start with row 7 of chart B

Knit 53 rows of chart B, then pick up 51 stitches along the border

Knit row 19 of Chart A, turn and purl back = 69 stitches

These 69 stitches divide as follows

24 stitches = border (chart C)

3 stitches = triangel (chart D)

15 stitches = wedge (chart E)

3 stitches = triangel (chart D)

24 stitches = border (chart F)

Start chart C and Chart F at row 25

Work the charts to row 212

At row 213 replace chart c with chart G and chart F with chart H

Knit like charts up to row 230

bind off very loose

weave in end and blog

have fun

Dagmar Lutz

isi_s@arcor.de

facts

yarn: 100% cashmere 750m/100g

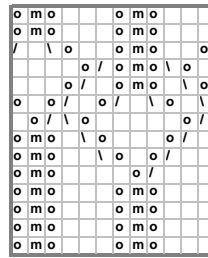
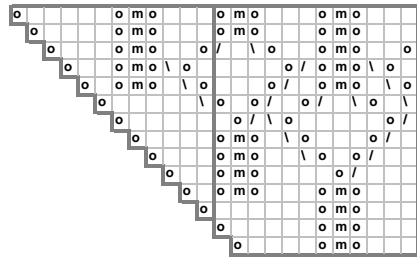
yarn need: 260 g

needles US 6

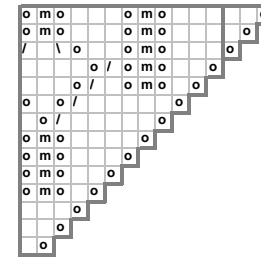
Length: 100cm

Chart E

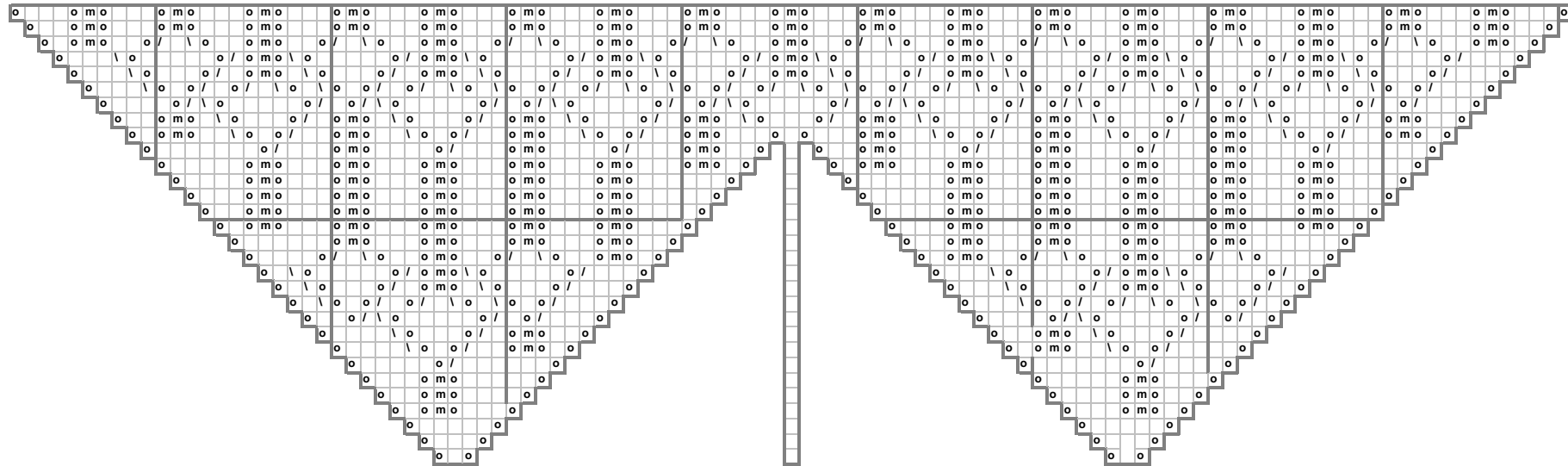
87
85
83
81
79
77
75
73
71
69
67
65
63
61



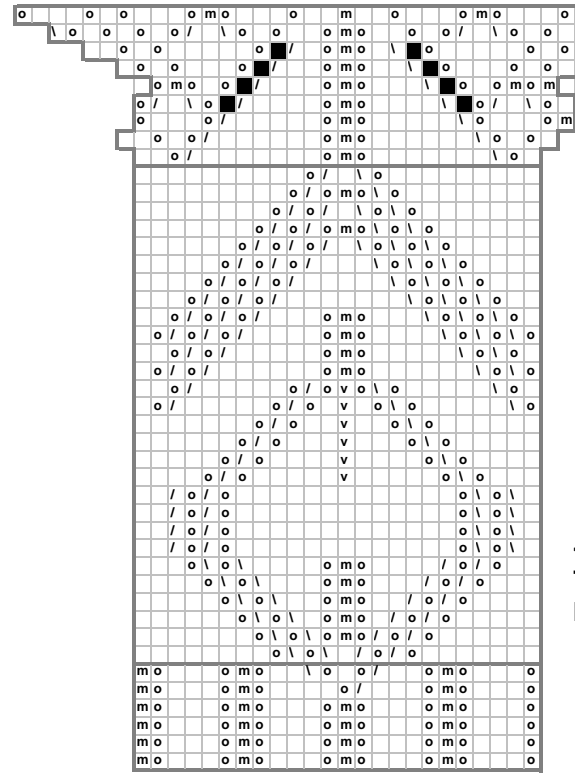
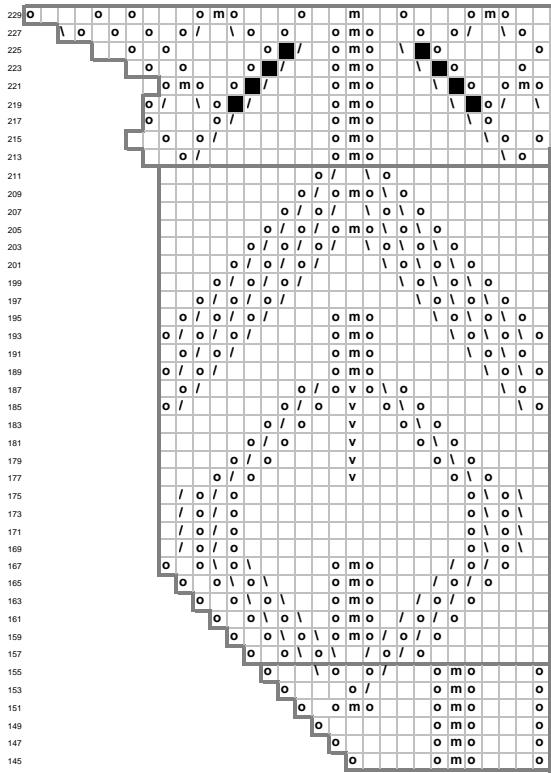
←-----
8 mal stricken
knit 8 times



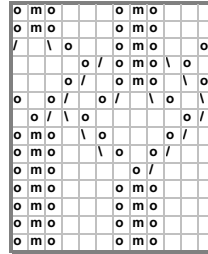
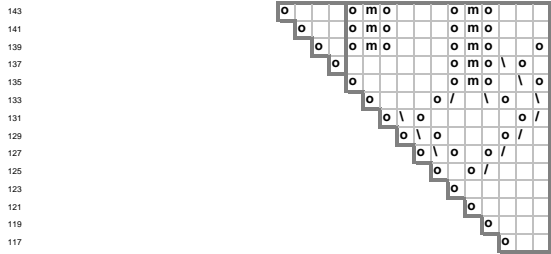
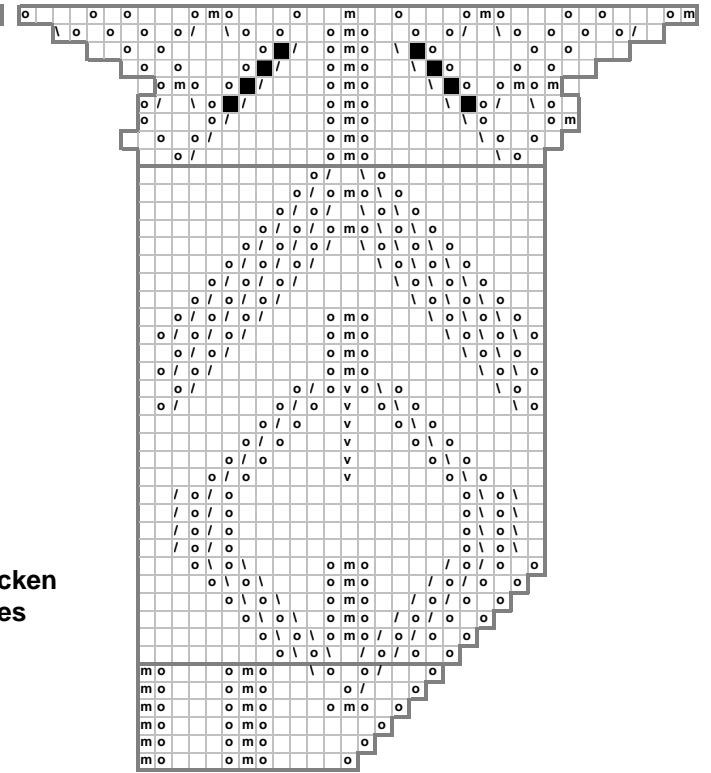
59
57
55
53
51
49
47
45
43
41
39
37
35
33
31
29
27
25
23
21
19
17
15
13
11
9
7
5
3
1



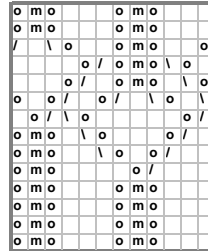
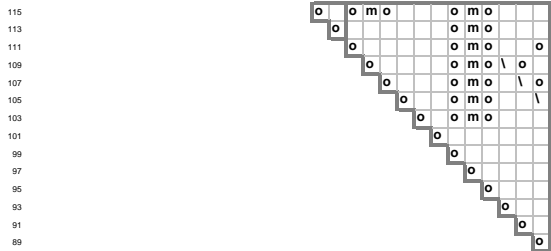
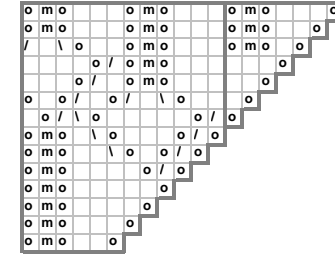
- rechte Masche auf der rechten Seite, linke Masche auf der linken Seite (knit on RS, purl on WS)
- o = Umschlag (yarn over)
- / = 2 Maschen zusammenstricken (knit two together)
- \ = 2 Maschen überzogen zusammenstricken (slip one, knit one, pass)
- m = 3 Maschen zentriert zusammenstricken (slip 2 knitwise, knit 1 stitch, pass the slipped stitch over)
- v = 3 Maschen links gerichtet zusammenstricken (sl1, k2tog, pss0, (slip one stitch then knit the next two together and pass the slipped stitch over))
- @ = aus dem Querfaden zunehmen und verschränkt abstricken (pick up loop, knit into back of loop)
- keine Masche (no stitch ignore)



←-----
**7 mal stricken
knit 7 times**



←-----
**13 mal stricken
knit 13 times**



←-----
**11 mal stricken
knit 11 times**

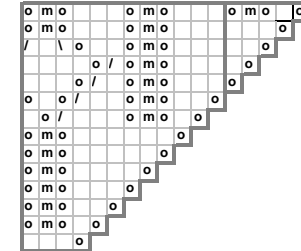


Chart E

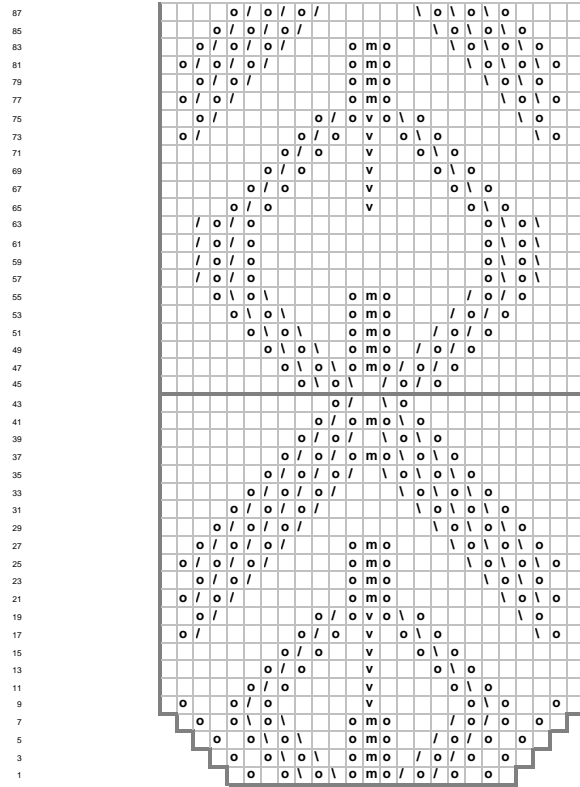
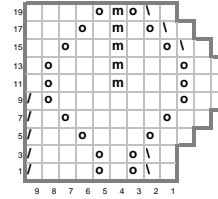
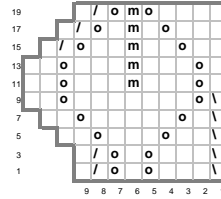


Chart A

Chart B



- rechte Masche auf der rechten Seite, linke Masche auf der linken Seite (knit on RS, purl on WS)
- o = Umschlag (yarn over)
- / = 2 Maschen zusammenstricken (knit two together)
- \ = 2 Maschen überzogen zusammenstricken (slip one, knit one, pass)
- m = 3 Maschen zentriert zusammenstricken (slip 2 knitwise, knit 1 stitch, pass the slipped stitch over)
- v = 3 Maschen links gerichtet zusammenstricken (sl1, k2tog, pssso, (slip one stitch then knit the next two together and pass the slipped stitch over))
- @ = aus dem Querfaden zunehmen und verschränkt abstricken (pick up loop, knit into back of loop)
- keine Masche (no stitch ignore)

Chart F

Chart C

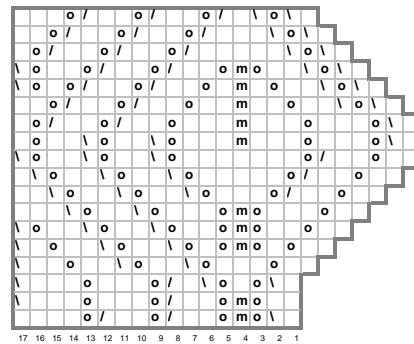
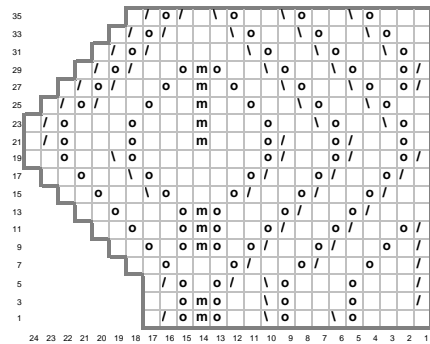


Chart E

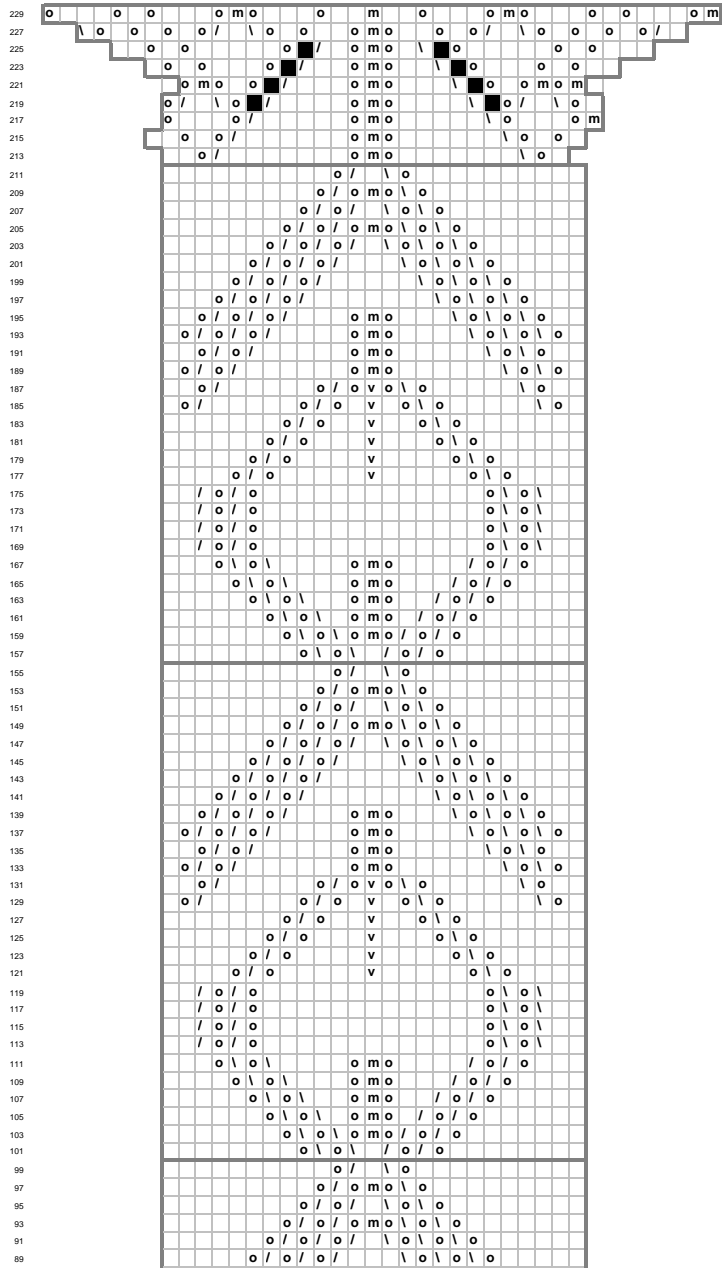


Chart G

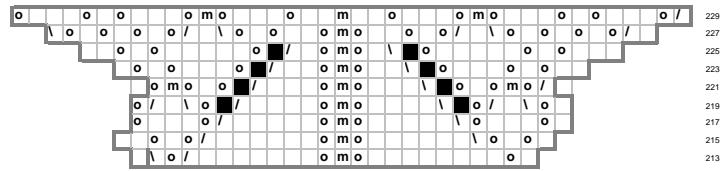


Chart H

